

H Dec

standard duty
platform scale

Technical Specification

DESCRIPTION

General

- The H Dec has been designed to withstand the rigors of everyday wear and tear when loading and unloading with fork trucks, pallet jacks and wheeled bins.
- It is ideal for use in a wide range of industrial weighing applications from receiving to the warehouse and dispatch.
- The minimal height of 3.31" makes the H Dec ideal for surface mounting. By fitting our low-gradient ramps from any combination of side positions, entry and exit is as easy as possible.
- By using the unique Weigh Bar® patented design, the H Dec provides accuracy along with inherent strength and overload protection. The Weigh Bar contains 3 to 10 times more steel content than shear beams or compression cells. Unlike other load cells, it easily absorbs impact to minimize peak forces and is virtually fatigue-proof.
- For easy serviceability, the Weigh Bar cables are terminated inside a water-resistant ABS junction box which contains a summation board with trim pots. These enable the 4 Weigh Bars to be quickly and accurately cornered.

Design

- Built to last, the H Dec is fabricated from tough, hard-wearing anti-slip ¼" thick deck structure. This gives the end user the full confidence and reliability needed when continually loading and unloading the scale close to its maximum capacity.
- A 25' long interconnecting cable allows the H Dec floor scale to be easily connected to a wide variety of Avery Weigh-Tronix or third-party indicators. Minimum indicator specification: 5 V excitation 2 µV verification per scale interval.
- Each Weigh Bar is fitted with a robust, easy-to-adjust stainless steel foot to provide reasonable height adjustment and ensure high accuracy even on uneven floors.

A Weight sensor

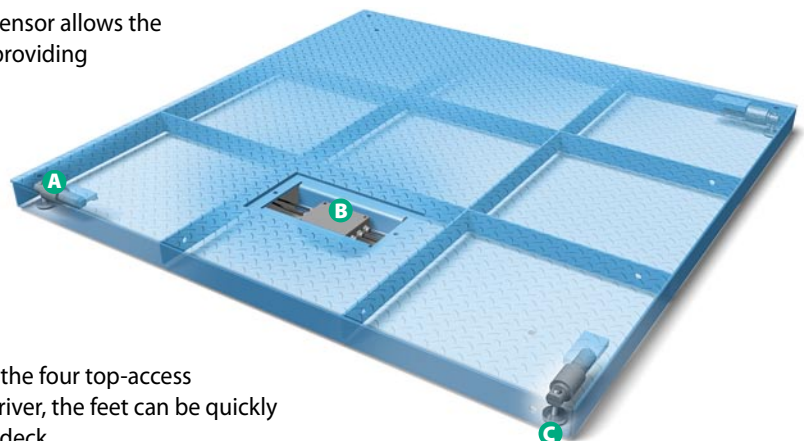
Fitted with the durable Weigh Bar, the weight sensor allows the H Dec to remain accurate up to 5000 lb, while providing outstanding side/end loading and shock load protection, making it less prone to failure.

B Removable deck plate

Opening provides safe, easy access to the junction box for servicing and routine calibration procedures.

C Leveling feet

The floor scale can be quickly levelled through the four top-access feet adjustment holes. With a flat blade screwdriver, the feet can be quickly and safely adjusted without needing to lift the deck.





SPECIFICATIONS

Capacities & Strengths

Capacity – The H Dec can be calibrated up to 5000 lb x 1 lb (NTEP pending) and soon will be able to be used in most legal and non-legal trade applications.

Maximum Strengths – The maximum strength signifies that the H Dec has been designed to fully withstand UDL loading (uniformly distributed loads) up to 6600 lb. (3000kg).

Designed to withstand 3300 lb (1500kg) axle loading with a point loading of 1650 lb (750kg) over a small area of 3" x 4" and at an even pressure of 150 PSI (10 bar).

Floor Scale Strength

| Deck size Inches | 48" x 48" | 60" x 60" |
|--------------------|-----------|-----------|
| Model | HD4848-05 | HD6060-05 |
| Scale Capacity | 5000 lb | 5000 lb |
| Weigh Bar Capacity | 1250 lb | 1250 lb |
| Max UDL loading | 6600 lb | 6600 lb |
| Axle loading | 3300 lb | 3300 lb |
| Wheel loading | 1650 lb | 1650 lb |
| Contact area | 3" x 4" | 3" x 4" |
| Footprint pressure | 150 PSI | 150 PSI |

Sizes, Capacities & Division Size

| Capacity | Model | Dimensions Inches (cm) |
|------------------------------------|-----------|-------------------------------------|
| 5000 lb x 1 lb (2500kg x 0.0kg) | HD4848-05 | 48 x 48 x 3.31 (122 x 122 x 8.4) |
| 5000 lb x 1 lb (2500kg x 0.0kg) | HD6060-05 | 60 x 60 x 3.31 (152 x 152 x 8.4) |

Finish – Hard-wearing light blue powder coating gives extra protection to the floor scale when in use.

Lifting & Repositioning – Two threaded top-access eye bolt holes ensure safety when lifting and installing.

Weight sensors – Four Weigh Bars

Weigh Bar output – 2mv/v- 5K

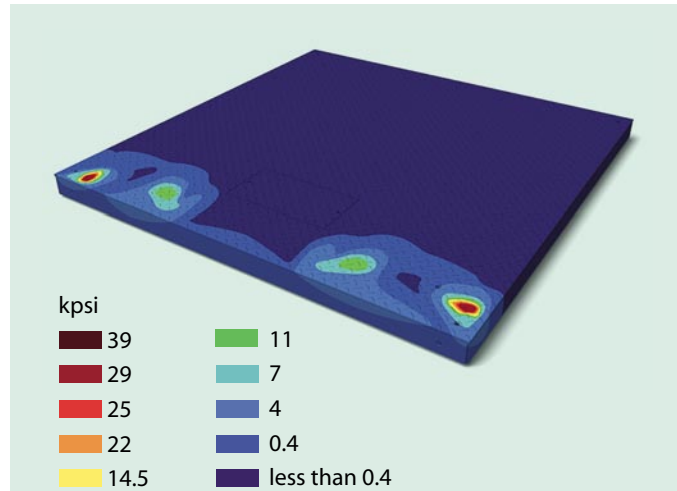
Overload protection – 150%

End loading – 100%

Temperature – 14 to 104°F (-10 to 40°C)

Accuracy – 5000 d

Agencies – 5000 d (NTEP Pending)



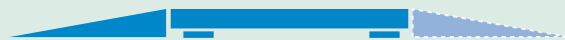
Finite Element Analysis (FEA)

The diagram above shows the results of a computer Finite Element Analysis (FEA) – a stress analysis tool. The different shadings indicate levels of stress within the H Dec when loaded with a two-wheel pallet jack. This is equivalent to 120% of the maximum load over 2 axles. As you would expect, most of the stress is concentrated in the areas directly underneath the wheels and on the weighing devices. However, the amount of stress in these critical areas is still well within the safe working limits of the steel used on the scale, registering 14.5 kpsi under the tires and 29 kpsi at the load cell mounting areas. (The yield strength of the structural steel is 39 kpsi.)

This means that the H Dec can withstand the day-to-day point loadings that you would expect from steel bins, fully laden pallet jacks and other industrial applications.

Optional Four-way ramps

The H Dec can be supplied with up to four low-gradient ramps which can be placed in the most efficient traffic patterns to speed up workflow from any direction. (Optional ramps, 48" or 60" are available at additional cost.)



Avery Weigh-Tronix - USA

1000 Armstrong Drive,
Fairmont, MN 56031-1439 USA
usinfo@awtxglobal.com
Toll-Free: (800) 533-0456
Phone: (507) 238-4461

Avery Weigh-Tronix - UK

Foundry Lane, Smethwick,
West Midlands B66 2LP UK
info@awtxglobal.com
Phone: +44 (0) 870 90 34343
Fax: +44 (0) 121 224 8183

Please call us or visit www.averyweigh-tronix.com
for your nearest Avery Weigh-Tronix distributor

Avery Weigh-Tronix

