

Avery Weigh-Tronix

Checkpoint S

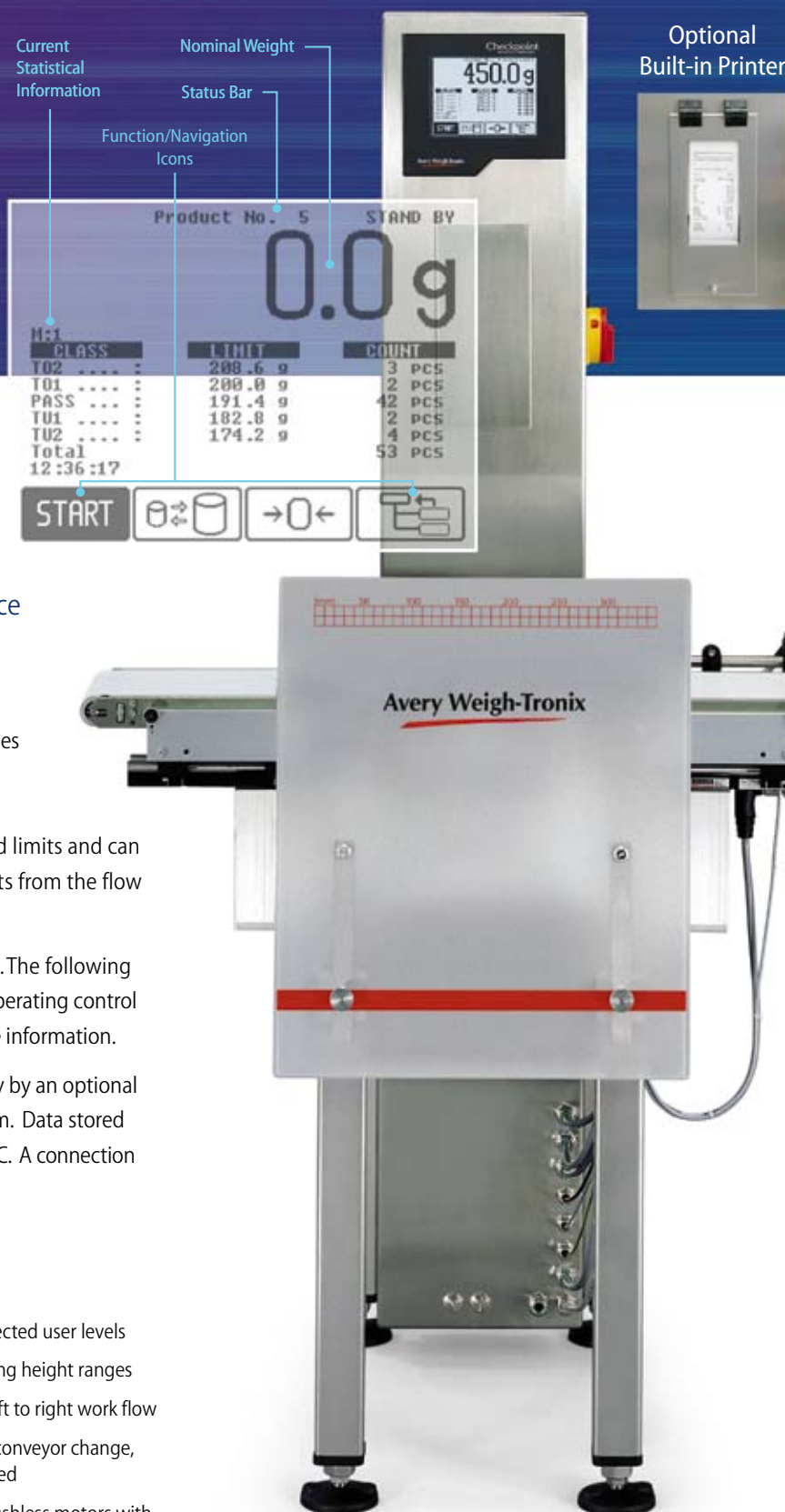
WIPOTEC • POWERED

DYNAMIC CHECKWEIGHING



Checkpoint S

WIPOTEC • POWERED



Today's technology for production control and quality assurance

Checkpoint S checkweighers are designed for the bottom line, offering economy of price and throughput up to 130 pieces/minute.

Checkpoint S is an uncomplicated system that provides fast, easy checking of the nominal weight of packages. These checkweighers offer the high level of accuracy needed to ensure packaged items are within specified limits and can automatically remove packages with incorrect weights from the flow of production.

A user-friendly LCD touch-screen simplifies operation. The following master data can be displayed and adjusted from the operating control unit: statistics, production, product, systems and service information.

Production data is recorded and can be printed directly by an optional thermal printer or downloaded via the Smartfile System. Data stored on a portable Smartcard can be printed or stored on a PC. A connection to a Centronics printer is also possible.

Operational Features

- 100% production monitoring of products to ensure they meet the minimum weight or average weight requirements with production documentation
- Rejection of out-of-tolerance products
- 5 weight classes for under, accept and over classification
- 25 PLUs (incorporates all relevant information required for the assigned product)
- Touch screen simple, menu-guided operation
- 3 password protected user levels
- 3 different working height ranges
- Right to left or left to right work flow
- Simple belt and conveyor change, no tools required
- Wear-free DC brushless motors with degree of protection to IP65
- Compact design for easy integration into production lines
- Line synchronization with isolated relay contacts:
 - Remote start (input)
 - Weighing mode (output)
 - Error (output)

Standard Configuration

- Stainless steel (AISI 316) housing with integrated control system
- Display/control unit with touch screen
- 3 transport conveyors (infeed, weighing and outfeed conveyor)
- 1 sorting device, mounted to the mainframe (pusher or air blast)



32K Bytes Data Card



PC
Compatible
Card Reader

Options

- Smartfile System or a Centronics printer output to print out statistics package for production documentation
- Built-in printer
- Memory expansion for 50 PLUs
- 3 or 5 zone lights indicating classification status
- Single error light indicating machine status
- Transfer plate between the conveyors to maintain smooth transition for unstable products
- Interface to transmit individual weights via: RS-232, RS-422, RS-485 or TTY (current loop)

3 Weight Capacities

Type	Checkpoint S-MB 1	Checkpoint S-MB 2	Checkpoint S-MB 3
Weighing Range	0 to 1500 g	0 to 3750 g	0 to 7500 g
Resolution ⁽¹⁾	0.2 g	0.5 g	1.0 g
Maximum possible throughput ⁽¹⁾ parts per minute (ppm)	130	130	80
Conveyor width (mm)	150	200	300
Standard weighing conveyor length (mm)	200/300/400	300/400	400/500
Units of measure	lb/oz/kg/g		
Smallest calibration values	0.2 g (7500 counts)		
Sorting device ⁽²⁾	Air blast for products up to 500 g Pusher for products above 500 g		
Printer ⁽³⁾	Built-in printer for production documentation / Smartfile/interface for external printer connection		
Temperature range	5 to 40°C (40 to 104°F) 80% non-condensing humidity		
Electrical supply	115 V / 230 V; 60 Hz / 50 Hz		
Maximum power consumption	500 VA		
Degree of protection	IP54 as per EN 60034, NEMA 12		
Pneumatic connection	87 psi		
Minimum Dimensions (base)	Approximately 810 mm (L) x 700 mm (W) x 1500 mm (H)		
Agency approvals	Certified for several countries; OIML R51 #NL-00.01, Measurement Canada #AM-5368		

(1) Depends on weight, dimensions and behavior of the product as well as conveyor speed and environmental conditions.

(2) Pusher for products over 1,000 g only in combination with a free-standing sub-frame

(3) Optional

WIPOTEC

Weigh Cell Technology

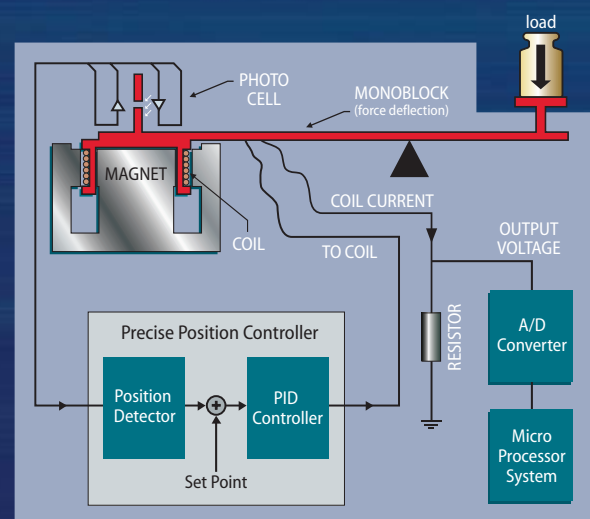
with Electromagnetic Force Restoration (EMFR)

To achieve the speed and accuracy required for dynamic checkweighing, Wipotec Weigh Cells are used in all Avery Weigh-Tronix Checkpoint models.

EMFR Operating Principle and Weigh Cell Design

Weigh Cells are an electronic version of the simple beam scale. A coil is attached to one end of the beam and load applied to the other. The amount of electrical current required to hold the coil at a neutral position within a magnetic field is proportional to the applied load. Since the Weigh Cell calculates weight based on changing current rather than physical motion, it is able to provide an extremely fast response time (typically 60 ms to reach 99.9% of the final value).

The links and levers that form the heart of the Weigh Cell are machined into a one-piece "monoblock" to ensure high precision, short settling time and reliable operation in an industrial environment. The electronics required to produce a usable digital signal, along with temperature and vibration compensation, are incorporated within the Weigh Cell.



THE RIGHT SYSTEM FOR THE JOB



Checkpoint S



Checkpoint M



Checkpoint M-SL



Checkpoint M-VA



Checkpoint M-NH

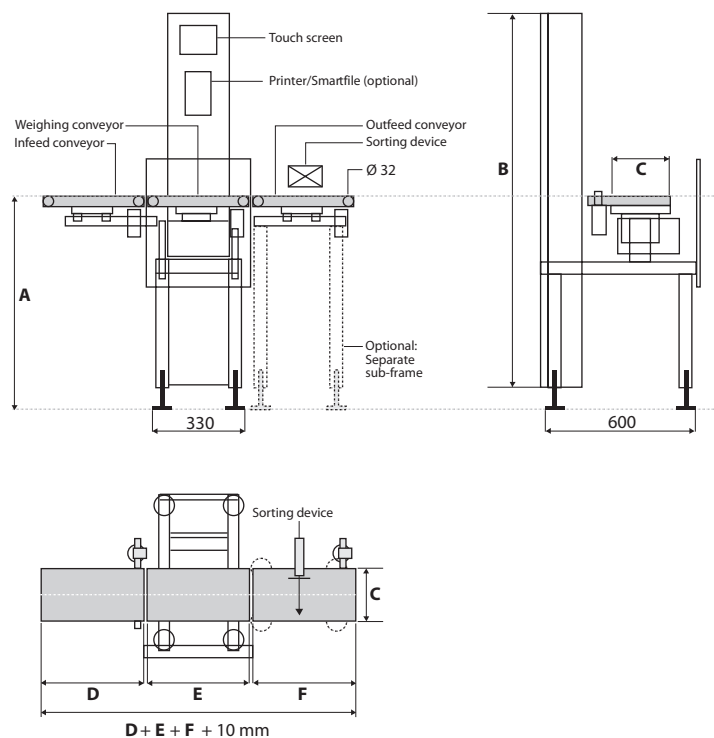
Products shown above include some optional equipment.

Localized sales and service support

Your Avery Weigh-Tronix distributor has extensive application experience and can help determine whether the Checkpoint S or one of the other efficient Checkpoint models is best suited for your needs. Avery Weigh-Tronix distributors are valuable resources that are readily available to you. They are complete support centers, providing needs assessment, technical information, product sales and service.

S Series Dimensions

		(mm)	(inches)
A	Working height	700-850	27.55 – 33.46
		800-950	31.49 – 37.4
		900-1050	35.43 – 41.33
B	Total height	Approx. 1465 mm (+150 mm when using the maximum foot height)	Approx. 57.68" (+5.91" when using the maximum foot height)
C	Conveyor width	150	5.91
		200	7.87
		300	11.87
D	Infeed/Outfeed conveyor length	300	11.81
		400	15.74
		500	19.68
		600	23.62
E	Weighing conveyor length	200	7.87
		300	11.81
		400	15.74
		500	19.68
F	Outfeed/Infeed conveyor length	300	11.81
		400	15.74
		500	19.68
		600	23.62



Please call us or visit www.wtxweb.com
for your nearest Avery Weigh-Tronix distributor.

Avery Weigh-Tronix

Fairmont, Minnesota U.S.A.
USA Toll-Free: 800-368-2039
USA Phone: 507-238-4461
www.wtxweb.com

Pointe Claire, Quebec Canada
CAN Toll-Free: 800-561-9461
CAN Phone: 514-695-0380
www.weigh-tronix.ca



Avery Weigh-Tronix reserves the right of technical modification.
Specifications are subject to change in accordance with any such modification.