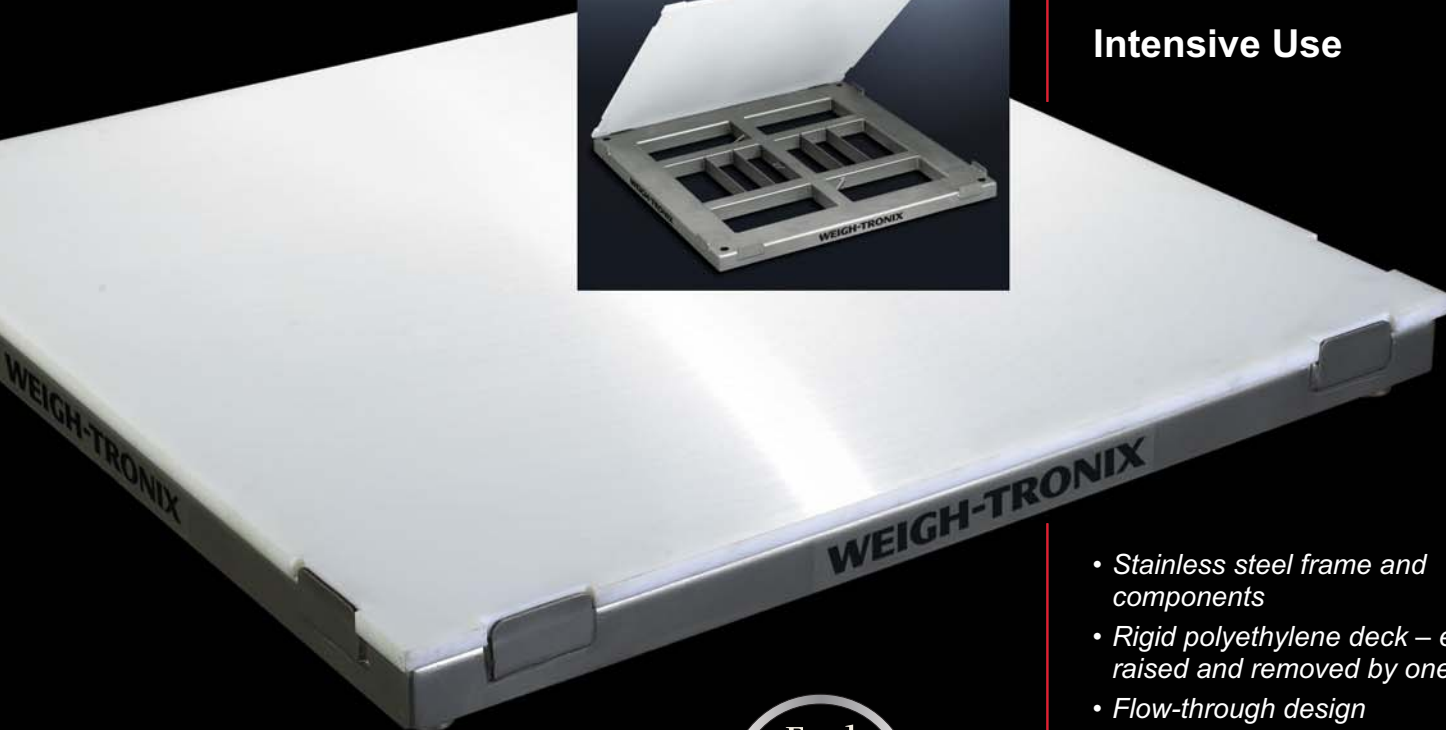




## PolyTop Floor Scale

### **EXTREME MEASURES:**

- Corrosive Environments
- Heavy Washdown
- Strict Sanitation
- Intensive Use



- *Stainless steel frame and components*
- *Rigid polyethylene deck – easily raised and removed by one person*
- *Flow-through design*
- *Top access leveling*





## Features and Benefits

**Polyethylene deck plate**— The structural support is designed to accommodate a lightweight polyethylene deck plate, making it easy for the top to be lifted by one person during washdown. No need for additional people to assist in cleanup – just lift up and clean out.

The 2,000 lb and 5,000 lb models use a 3/4" polyethylene deck plate while the 10,000 lb uses a 1" plate.

The polyethylene top deck plate is highly resistant to chemicals, including organic solvents.

**Stainless steel construction**— Except for the polyethylene deck, the PolyTop features all stainless steel construction specifically designed for the food and chemical industry.

**Hermetically sealed stainless steel Weigh Bars®**— Comes standard with approximately 20' of load cell cable to interface with the remote junction box.

**Remote stainless steel junction box**— Minimizes potential problems during severe washdown. The junction box comes with an additional 25' of cable to interface with the weight indicator.

## Specifications

**Weight sensors:** Four hermetically sealed stainless steel Weigh Bars

**Load cell output:** 2mV/V

**Overload protection:** 150%

**End loading:** 100%

**Accuracy:** NTEP at 5,000 divisions

**Temperature:** 14 to 104° F (-10 to 40° C)

**Agencies:** NTEP C.O.C.# 03-003, Canadian Weights and Measures (pending), FM

**Interface cable:** 25 ft. of cable included

## Models

Model Number	Platform Size	Capacity	
		lb	(kg)
FCQP 3030-02*	30" x 30" x 3.88"	2,000	(909)
FCQP 3636-02*	36" x 36" x 3.88"	2,000	(909)
FCQP 4848-02*	48" x 48" x 3.88"	2,000	(909)
FCQP 6048-02	60" x 48" x 3.88"	2,000	(909)
FCQP 7248-02	72" x 48" x 3.88"	2,000	(909)
FCQP 6060-02	60" x 60" x 3.88"	2,000	(909)
FCQP 7272-02	72" x 72" x 3.88"	2,000	(909)
FCQP 7260-02	72" x 60" x 3.88"	2,000	(909)
FCQP 8460-02	84" x 60" x 3.88"	2,000	(909)
FCQP 4848-05*	48" x 48" x 3.88"	5,000	(2,273)
FCQP 6048-05	60" x 48" x 3.88"	5,000	(2,273)
FCQP 7248-05	72" x 48" x 3.88"	5,000	(2,273)
FCQP 6060-05	60" x 60" x 3.88"	5,000	(2,273)
FCQP 7260-05	72" x 60" x 3.88"	5,000	(2,273)
FCQP 7272-05	72" x 72" x 3.88"	5,000	(2,273)
FCQP 8460-05	84" x 60" x 3.88"	5,000	(2,273)
FCQP 4848-10*	48" x 48" x 4.81"	10,000	(4,545)
FCQP 6048-10	60" x 48" x 4.81"	10,000	(4,545)
FCQP 7248-10	72" x 48" x 4.81"	10,000	(4,545)
FCQP 6060-10	60" x 60" x 4.81"	10,000	(4,545)
FCQP 7260-10	72" x 60" x 4.81"	10,000	(4,545)
FCQP 7272-10	72" x 72" x 4.81"	10,000	(4,545)
FCQP 8460-10	84" x 60" x 4.81"	10,000	(4,545)

\*Single polyethylene deck plate. All other models dual two-part deck plate for ease of handling.

### Weigh-Tronix

1000 Armstrong Dr.

Fairmont, MN 56031 USA

Telephone: 507-238-4461

Facsimile: 507-238-4195

e-mail: [industrial@weigh-tronix.com](mailto:industrial@weigh-tronix.com)

[www.wtxweb.com](http://www.wtxweb.com)



### Weigh-Tronix Canada, ULC

217 Brunswick Blvd.

Pointe Claire, QC H9R 4R7 Canada

Telephone: 514-695-0380

Facsimile: 514-695-6820

# WEIGH-TRONIX

Weighing Products & Systems